

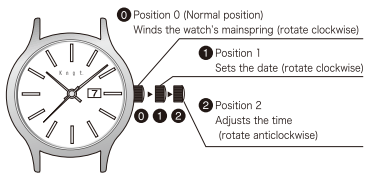
仕上がりW70×H50mm (W210×H250mm)



Maker's Watch Knot  
Cima building B1F 2-20-3 Kichijojihon-cho  
Musashino-shi Tokyo 180-0004 JAPAN  
TEL.0800-555-7010

### Handling your Knot timepiece

**Positions and operation of the crown**  
The crown is pulled out and used as shown in the following illustration.

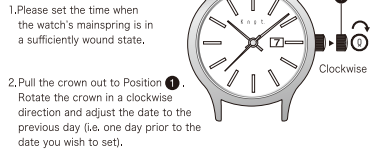


**The Mainspring**  
The sustained running time for the mainspring, in a sufficiently fully wound state, is approximately 42 hours. In such a state, the watch is capable of maintaining a consistent degree of timekeeping precision.

Winding guidelines	
<p><b>Automatic winding</b></p> <p>When worn on your wrist, the watch's mainspring is wound automatically by the natural movements of your arm during everyday life. Please aim to wear/carry the watch with you for 8 hours a day or longer. In some cases, such as working at a desk, or in other situations where there is little arm movement, the watch may be insufficiently wound. In such cases, please wind the watch by hand.</p>	<p><b>Manual winding</b></p> <p>The watch's mainspring is wound manually by rotating the crown in a clockwise direction while in Position 0. Where the watch has stopped, the mainspring can be restored to a sufficiently wound state by turning the crown through approximately 40 times.</p>

### Setting the time and date

- Set the date with the crown in Position 1.
- Set the time (i.e. adjust the hour and minute hands) with the crown in Position 2.



1. Please set the time when the watch's mainspring is in a sufficiently wound state.



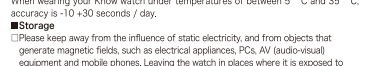
2. Pull the crown out to Position 1. Rotate the crown in a clockwise direction and adjust the date to the previous day (i.e. one day prior to the date you wish to set).



3. Pull the crown out to Position 2. When the crown is pulled out to this position, the second hand of the watch will stop moving. When adjusting the watch to show the correct time, time the pulling of the crown to coincide with the second hand reaching the 12 o'clock position.



4. Rotate the crown (in Position 2) in an anti-clockwise direction to advance the minute and hour hands and set the date. The date changes when the hour hand reaches around 12AM.



5. Rotate the crown (in Position 2) to adjust the time. The date changes when the hour hand reaches around 12AM. Please be careful not to mistake AM for PM when adjusting the date.

6. Return the crown to Position 0. The date is now set.

The watch's date function follows a 31-day cycle. Please correct the date at the beginning of March, May, July, October and December.

### Caution

Please do not adjust the watch's date between the hours of around 9PM and 2AM. Setting the date during this time may result in breakdown. There may also be some cases in which the date shown on the watch does not change, even when the actual date changes. When the hands of the watch show a time that lies between the hours of 9PM and 2AM, please set the crown to Position 2 and advance the hands of the watch to past 2AM before adjusting the date.

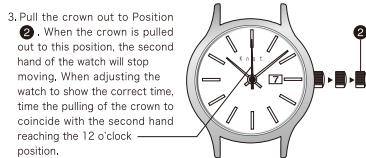
### Accuracy of this Mechanical Watch

The timekeeping precision of this mechanical watch varies depending on the following usage conditions: (1) The amount to which the mainspring is wound (2) The wearer's posture (3) The environment under which the watch is used (temperature, magnetism, shocks, etc.)

(1) The amount to which the mainspring is wound  
This mechanical watch is supplied with the most stable and consistent level of energy, and can therefore maintain the most consistent degree of timekeeping precision, when its mainspring is in a sufficiently wound state.

(2) Posture/orientation  
Mechanical watches are influenced by and undergo changes as a result of gravitational forces. When worn on its wearer's wrist, a watch moves through various different postures or orientations, and the direction of gravitational forces exerted upon it change from moment to moment, giving rise to differences in precision.

(3) The environment under which the watch is used (temperature, magnetism, shocks, etc.)  
The parts of a mechanical watch that control its accuracy use components that are made from metal. These parts are influenced by expansion and contraction due to changes in temperature, giving rise to differences in precision.



3. Pull the crown out to Position 2. When the crown is pulled out to this position, the second hand of the watch will stop moving. When adjusting the watch to show the correct time, time the pulling of the crown to coincide with the second hand reaching the 12 o'clock position.

Because mechanical watches use metal parts, they are influenced by magnetic forces, giving rise to differences in precision. In order to maintain the accuracy of your timepiece, please keep your watch away from objects that generate strong magnetic fields. Differences in precision can also arise when the watch has been subjected to strong shocks. (When the timekeeping precision of your watch is inconsistent) The accuracy of this mechanical watch can become unstable or inconsistent due to problems such as or running out of oil, or frictional wear. Every 3-4 years, please use our Mechanical Watch Maintenance and Cleaning Service (Movement change) included. There are also some cases in which repairing and restoring the watch to its initial level of performance by can present difficulties when the watch's performance has been degraded due to frictional wear of parts, etc. due to long-term use.

**Water Resistance**  
Your Knot watch is water resistant to 5 ATM, meaning that it has a certain level of resistance to sweat, drops of water when washing one's face, light showers of rain, and other water encountered during daily life. You cannot use your Knot watch under water, or in other such environments.

use our Mechanical Watch Maintenance and Cleaning Service (Movement change) included

Please ensure that the crown is pushed back firmly before use to prevent water from entering the watch case.  
Please do not rotate or pull out the crown while your watch is wet or submerged in water, to prevent water from entering the watch case.  
Repairs for water damage caused by improper handling are not covered by the Knot warranty.

### Daily Inequality

When wearing your Knot watch under temperatures of between 5 °C and 35 °C, accuracy is -10 +30 seconds / day.

### Storage

Please keep away from the influence of static electricity, and from objects that generate magnetic fields, such as electrical appliances, PCs, AV (audio-visual) equipment and mobile phones. Leaving the watch in places where it is exposed to strong magnetic fields for extended periods of time may cause the parts to become magnetized and may cause a breakdown. Please note that demagnetizing of parts is not covered by the Knot warranty.  
Please keep away from environments under -5°C and 35°C. Exposure to such environments may cause the functionality of the watch function to be degraded, or cause the watch to stop functioning. Please take care, as leaving the watch in environments such as these may cause breakdown.

Please keep away from strong vibration.  
Please keep away from excessively dusty places.  
Please keep away from unusual environments, such as hot springs or drawers containing insecticides.  
Exposure to direct sunlight or strong light for extended periods of time may cause discoloration of the dial. Please note that discoloration of the dial is not covered by the Knot warranty.  
Please keep away from chemicals and chemical vapor.

### Other Precautions

**Daily Care**  
The watch case and strap come into direct contact with your to skin, like undergarments. Leaving the watch dirty may cause rust, which in turn may soil the sleeves of clothing or cause skin rashes. Please keep the watch clean at all times.  
Simply wiping the case, strap and gasket with a soft cloth when you take off watch to remove sweat and moisture helps to extend the service life of these parts.  
[Glass]  
Strong shocks to the watch case may cause the case to deform slightly, and there is a risk that the glass may break. Please take care to avoid strong shocks.

**Rashes and Allergies**  
For people who are prone to rashes, wearing this watch may cause itching or skin rashes. Possible causes of rashes are considered below.  
Allergy to metal or leather  
Rust that has formed on and/or dirt, sweat, etc., attached to the watch's main body and strap  
In the event that your skin shows signs of rashes, itching or other abnormalities, please stop use immediately and consult a doctor.

### Other Precautions While Wearing

Please be careful of the following.  
When you fall over or bump into somebody, in some cases, wearing the watch may cause unexpected injuries. Please take care to prevent such injuries.  
Especially when holding babies and infants, in some cases, touching the watch may result in injury or rashes due to allergic reactions, etc. Please take sufficient care to keep them away from the watch.

### Warranty Information

This Knot watch is protected by the Knot warranty according to the following warranty terms and conditions.

- In case that malfunction occurs under proper, normal use in accordance with this instruction manual, within the warranty period of 3 years after your purchase, we will repair and/or adjust for you, free of charge.
- The part of the watch covered by the Knot warranty is the movement. Other parts of the watch are not covered by the warranty.
- The warranty certificate is only valid in Japan.
- The warranty certificate shall not be re-issued. Please store it safely and carefully.

2. In the following cases, even for parts covered by the warranty, and during the valid warranty period, repairs shall be conducted at a fee.  
(a) Breakdowns or damage/destruction due to mistaken use or carelessness  
(b) Breakdowns or damage/destruction due to disasters such as fires, floods or earthquakes  
(c) Breakdowns or damage/destruction due to unwarranted repairs and/or modifications

- Changes to the external appearance of the watch arising during use (e.g. minor scratches to the watch case, glass, crown, etc.)
- Where the name of the store and date of purchase is not indicated on the warranty certificate, or where these details have been overwritten
- Where a warranty certificate is not displayed

3. When repairing the watch, in some cases, we may replace the watch movement or use substitute parts to replace the case, dial, hands, glass, strap or other parts. Please be aware of this.

4. This warranty certificate promises that we will carry out repairs free of charge, during the warranty period and according to the terms and conditions stated herein. This warranty certificate does not restrict your legal rights as a customer.

### Product Specifications

- Model number / AT-38
- Jewels / 24 jewels
- Model type / Automatic and manual winding timepiece
- Accuracy / +10~30 seconds / day
- Display functionality / 3 hands (hour, minute, second), date calendar
- Vibration frequency / 28,800 oscillations per hour
- Drive system / Mainspring coil/winding type (self-winding & manual winding)
- Running time / Approximately 42 hours
- Water resistant / 5 ATM

Specifications may be subject to change without notice due to improvements.  
The timekeeping accuracy given is a resting accuracy level. Accuracy may exceed the bounds given as a result of the conditions and/or environment under which the watch is used (e.g. degree of winding of the mainspring, the period of time worn or carried, posture/orientation when wearing, ambient temperatures, etc.)