

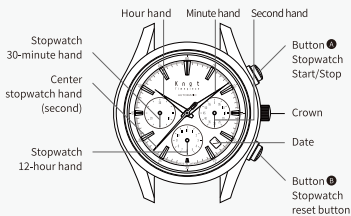
仕上がりW70×H50mm (W210×H250mm)

表1



Maker's Watch Knott
Cima building B1F 2-20-3 Kichijojihon-cho
Musashino-shi Tokyo 180-0004 JAPAN
TEL.0800-555-7010

■The names of each part and their main functions



■About the spring

The watch will run for about 45 hours from the time the spring is fully wound. Keeping the watch sufficiently wound would maintain its accuracy consistently.

Winding guide This is a mechanical and self-winding watch(with hand-wind function).

- Self-winding
When the watch is worn on your wrist, the motion of your arm on a daily basis will wind the spring. Please wear the watch for more than 8 hours a day. The spring might not be sufficiently wound if your arm does not move much, such as when doing deskwork. In such cases, please wind the spring by hand.
- Hand-winding
The spring is wound when the crown is turned clockwise in position 0. Turning the crown about 40 times will fully wind the spring of a watch that has stopped.

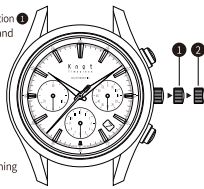
There is no concern that the spring will break from overwinding.

■How to adjust the time and date

- Adjust the date with the crown in position ①
- Adjust the hour hand and minute hand with the crown in position ②

1. Please make adjustments when the spring is fully wound.

2. Pull the crown out to position ①
Set the date to the previous day by turning the crown clockwise.
(You should adjust the date to 1 day before your desired date.)



The date is based on a cycle of 31 days.
Please adjust the date at the start of March, May, July, October, and December. Please do

Attention

Please do not adjust the date between 8 p.m. and 2 a.m. Adjusting the date during this time period might cause problems. There might also be occasions when the date displayed does not change when it should. When the watch hands are between 9 p.m. and 2 a.m., please set the crown to position 2 and bring the time forward to after 2 a.m., before adjusting the date.

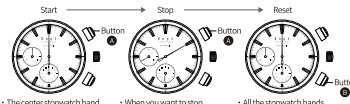
■About the chronograph

Measures up to 12 hours.

- ※The chronograph has a stopwatch and can display the time.
- ※When the stopwatch is in operation, please pull the crown out to position 2 and do not turn the hand.
- ※Before using the stopwatch, please make sure that the center stopwatch hand is at 0.
- ※If it is not at 0, please reset it by pressing the button.
- ※Please make sure that the spring is sufficiently wound before using the stopwatch.

■How to use the stopwatch

Press the buttons in this order: Start → Stop → Reset



- The center stopwatch hand (second) will start moving when button ① is pressed.
- When you want to stop measuring the time, pressing button ② will stop the stopwatch hand.
- All the stopwatch hands will return to their original positions when button ③ is pressed.

■How to read the stopwatch minute hand

The stopwatch minute hand makes one round in 30 minutes. Please note that the reading of the stopwatch minute hand depends on the position of the stopwatch hour hand.



(In the case of 0 to 29 minutes)
As the stopwatch hour hand is less than halfway between the markers, the stopwatch minute hand can be read as it is, and the elapsed time is read as 6 hours, 20 minutes, and 10 seconds.



(In the case of 30 to 59 minutes)
As the stopwatch hour hand is more than halfway between the markers, 30 minutes must be added to the stopwatch minute hand, and the elapsed time is read as 6 hours, 50 minutes, and 10 seconds.

■About the accuracy of a mechanical watch

Changes in the accuracy of a mechanical watch depend on how it is used and include the following factors.
①How much the spring is wound. ②Position ③Environment (Temperature, magnetism, shock, etc.)

- ①How much the spring is wound
When the spring of a mechanical watch is fully wound, it supplies energy in a consistent manner to maintain accuracy.
- ②Position
Gravity affects a mechanical watch. When a watch is worn, it assumes different positions and the direction of gravity changes constantly, affecting accuracy.
- ③Environment (Temperature, magnetism, shock, etc.)
□As metal parts are used to control accuracy in a mechanical watch, expansion and contraction of the metal due to changes in temperature will affect accuracy.
□As metal parts are used for a mechanical watch, the accuracy is affected by magnetism. To maintain the accuracy of the watch, please do not place it close to magnetic objects.
□Accuracy will also be affected if the watch receives a strong shock.

(When the accuracy is inconsistent)

The accuracy of a mechanical watch will be inconsistent for reasons such as the breaking down of lubricants and wearing out of parts. Every 3,4 years, please use our Mechanical Watch Maintenance and cleaning Service (Movement change included). In addition, the functions might be affected if parts are not after using the watch for a long time. Even after repair, it might be difficult to restore the functions to their original condition.

■About water resistance

- The water resistance of the watch is suitable for everyday use (water resistance of 10 ATM). Please do not use the watch when scuba diving or saturation diving. Please avoid placing it under running water from a faucet. The water pressure from a faucet is very high and may even damage a watch with water resistance suitable for everyday use.
- Please ensure that the crown is pushed all the way in before using the watch to prevent water from entering.
- Please do not turn or pull out the crown when it is wet. Water might enter the watch.
- Repairs due to water entering the watch as a result of improper use will be subject to fees, even during the warranty period.

■About the deviation per day

When the watch is worn on the wrist in a temperature of between 5°C to 35°C, the deviation per day is between -15 seconds and +25 seconds.

■About storage

- Please do not place the watch close to magnetic objects, such as electronic products, computers, AV equipment, smartphones, or where there is static electricity. When leaving the watch in a place with a strong magnetic field, parts of the watch will become magnetized, which could lead to malfunction. Please note that demagnetization is subject to fees even during the warranty period.
- In an environment below -5°C or above 35°C, the performance of the watch lowers or it stops working. Furthermore, please note that leaving the watch in such an environment could lead to malfunction.
- Please do not leave the watch in a place with strong vibrations.
- Please do not leave the watch in a place with a lot of dust.
- Please do not leave the watch in atypical environments such as a hot spring or a drawer with insect repellent.

- The color of the dials might change if the watch is left for a long time in a place that is sunny or receives strong light. Please note that color changes of dials are not covered under the warranty.
- Please do not leave the watch in a place with chemical vapors or where it would come into contact with chemicals.

■Other points to note

- [Daily maintenance]
□The case and strap comes into direct contact with the skin, just like clothes. If the watch is not cleaned, it might rust and stain your sleeves or it might cause a rash. As such, please keep the watch clean.
- When removing your watch, just wiping off the perspiration and moisture with a soft cloth, for example, will increase the lifespan of the case, strap, and gaskets.
[About the crystal (glass)]
Please note that a slight dent caused by a strong shock to the case might crack the crystal.

■About rashes and allergies

- The watch might cause a rash or itch depending on the condition of a wearer who is prone to rashes. The following factors might cause a rash.
• Being allergic to metals and leather
• Rust, dirt, or perspiration on the body or strap of the watch.
- On the rare occasion of a skin abnormality, please stop wearing the watch immediately and see a doctor.

■Other points to note when wearing the watch

- Please note that unexpected injuries from a fall, coming into contact with other people, etc., might result from wearing the watch.
- Please pay careful attention particularly when holding an infant as injuries or rashes due to allergies might occur upon contact with the watch.

■Conditions of warranty

This watch is under warranty based on the following conditions.

1. In the rare case of a problem within the three-year warranty period after purchasing the watch and handling it under conditions of normal use in accordance with the manual, repairs/adjustments will be free of charge.
 - The movement is the part covered by the warranty. The other parts are not covered by the warranty.
 - The warranty is valid only within Japan.
 - Please keep the warranty carefully as it will not be reissued.
2. Repairs in cases such as the following will be subject to fees even during the above-mentioned warranty period or when covered by the warranty.
 - (a) Malfunction or damage due to improper use or negligence.
 - (b) Malfunction or damage due to natural disasters such as a fire, flood, or earthquake.
 - (c) Malfunction or damage due to unauthorized repair or modification.

- (d) Changes to the appearance from wearing the watch. (Small scratches, etc. on the case, glass, and crown)
- (e) If the name of the shop that sold the watch or the date of purchase is not written on the warranty, or if the warranty has been rewritten.
- (f) If the warranty is not presented.

3. Please note that during repairs, the movement might be replaced and parts such as the case, dial, hand, glass, and strap, might be substituted.
4. This warranty assures that repairs are free of charge during the period and under the terms stated in this document. Your legal rights will not be restricted by this warranty.

Product specifications

- Model number ATC-40
- Number of precious stones used 34 stones
- Type Mechanical self-winding watch
- Time accuracy Deviation per day -15 seconds to +25 seconds (In normal temperature: 5°C - 35°C)
- Display functions 6 hands (Hour hand, minute hand, small second hand, stopwatch hand [second], 30-minute hand, and 12-hour hand) and date
- Number of vibrations 28,800 vibrations/hour
- Drive system Spring winding (self-winding + hand-winding)
- Running time Approximately 45 hours
- Water resistance 10 ATM

※The specifications are subject to change without advance notice for the purpose of quality improvement. ※The accuracy described is static accuracy. Depending on the conditions and environment (How much the spring is wound, how long the watch is worn, the position of the watch, surrounding temperature, etc.) the deviation per day might exceed the range of accuracy.