

Q

Classic series autmatic power reserve

CAP-38

User Manual

- **Accuracy of Mechanical Watches**
- The accuracy of mechanical watches varies depending on the following usage conditions and other factors.
- ①Amount of winding ②Position ③Operating environment (humidity, magnetism, shock, etc.)
- ①Amount of winding
- A mechanical watch can supply the most stable energy and maintain stable accuracy when the mainspring is fully wound.
- ②Position
- The accuracy of mechanical watches is influenced by the Earth's gravity. When worn on the wrist, the watch is positioned in different directions which causes the direction of gravity to change from one moment to the next, resulting in variations in the watch's accuracy.
- ③Operating environment
- Since mechanical watches use metal parts to control their accuracy, changes in humidity can cause the metal to expand and contract, resulting in variations in the watch's accuracy.
 - Since mechanical watches use metal parts, these can be affected by magnetism, resulting in variations in the watch's accuracy. To maintain the accuracy of your watch, keep it away from objects that generate strong magnetism.
 - The watch's accuracy can also be affected if it is subjected to strong impacts.

◁If accuracy is not stable▷

The accuracy of mechanical watches can become unstable due to the lubricating oils drying up or due to wear over time. We recommend having your watch serviced (including movement replacement) every 2-3 years. If the mechanical watch's performance deteriorates due to wear of parts after prolonged use, it may be difficult for the watch to be restored to its initial performance through repair.

- **Water resistance**
- Water resistance for daily life (3 or 5 bar) means the watch is able to withstand water droplets from daily perspiration, face washing, and sudden rainfall. The watch is not designed to be submerged in water.□ Water resistance for daily activities (10 bar) does not include scuba diving or saturation diving. The watch should not be placed under the tap. Since water leaves the tap at high pressure, a watch with water resistance for daily activities may not be sufficiently watertight.
 - Always check that the crown is pushed in firmly before using the watch, to ensure it is watertight.□ Do not turn or pull out the crown when there is water on it, as this may allow the water to enter the mechanism.
 - ※ Any repairs required as a result of water damage from improper use will be subject to payment even within the warranty period.

- **Average daily precision**
- The average daily precision is between -15 seconds and +25 seconds per day (at a room temperature of 5° C to 35° C).
- ※The precision day difference is the advance or delay after 24 hours at room temperature with the mainspring fully wound in a static condition.

- **Straps**
- 【Attaching the strap】
- The strap is fitted with an Easy Lever (see image below). Attach the short half of the strap at the 12 o'clock side and the long half at the 6 o'clock side. Turn the watch and strap upside down, then insert the strap into the watch starting at the opposite side from the lever ①.

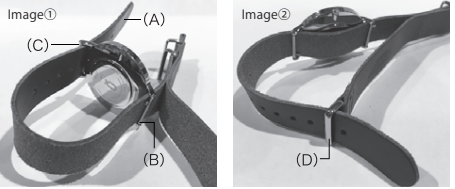


Push the lever inwards with your fingernail and slide the lever side of the strap (2) into the hole on both sides, then insert the other half of the strap in the same way. Take care not to damage the watch body when inserting the EasyLever into the hole.

【NATO strap】

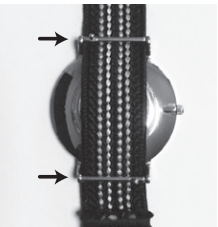
First, attach the two supplied Easy Levers onto the watch body.

Image①: Thread the long end of the strap (A) through the space between the watch case and spring bar (B) on the 12 o'clock side, and then the 6 o'clock side (C) in the same way. Image②: Thread the long end of the strap through the other fitting (D) and pull firmly.



【Braid strap】

First, place the strap against the back of the watch. Then, attach two Easy Levers to the watch body to hold the strap in place.



※ Easy Levers can be purchased from our online shop. (set of two for ¥350).

- **Storage**
- Keep the watch away from electrical appliances, computers, audio-visual equipment, mobile phones and other devices which are magnetic or emit static electricity. Prolonged exposure to strong magnetic fields may magnetize the components and cause them to fail. De-magnetization repair will be subject to payment even within the warranty period.
- In environments with temperatures below -5° C or above 50° C, the watch's operation may become degraded or cease. Prolonged exposure to such temperatures may cause the watch to malfunction.□ Do not leave the watch in locations with strong vibrations.□ Do not leave the watch in very dusty environments.□ Do not leave the watch in unusual environments such as hot springs/saunas or in drawers with mothballs.□ Leaving the watch in direct sunlight or strongly lit location for an extended period of time may lead to dial discoloration. Dial discoloration is not covered by the warranty.□ Do not leave the watch in locations where chemical vapors are emitted or where it will be exposed to chemicals.
- **Other notices**
- 【Daily care】
- The watch case and strap are in direct contact with the skin. If not kept clean, they may rust and stain the cuffs of clothing or cause a rash. When removing the watch, wiping off sweat and moisture with a soft cloth will extend the life of the case, strap and gaskets.
- 【Glass crystal】
- If the case is subjected to a strong shock, a small distortion of the case may cause the crystal to crack.
- 【Metal straps】
- From time to time, use a toothbrush to clean the strap with soapy water. When doing so, be careful not to splash water on the watch itself.
- 【Leather straps】
- Leather straps are natural products and will therefore have wrinkles and creases. This characteristic is a result of the unique texture of natural products, and is not a fault. Leather straps may fade or change color if exposed to moisture. In order to prevent the leather from becoming hard and susceptible to cracking, it is recommended to wipe the leather with a soft cloth after use. Discoloration, deterioration, scratches and other changes in appearance due to use are not covered by the warranty. Furthermore, no responsibility will be accepted for any color transfer to clothing.

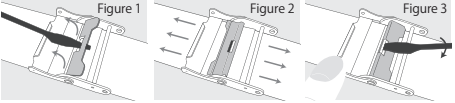
- **Allergic reactions**
- Persons susceptible to allergic reactions may experience rashes, itching, and irritation of the skin. The following are some possible causes:
 - Allergy to metal or leather
 - Rust, dirt, sweat etc. on the watch or strap if you experience any skin abnormalities, discontinue use immediately and consult a doctor.

- **Other precautions**
- Take care not to damage your fingernails when putting on and taking off the strap.
 - If you fall or make contact with another person while wearing the watch, this may result in unexpected injury.
 - If holding an infant or child, do not place the watch in contact with their skin, as it may cause an injury or allergic reaction.

【Adjusting a mesh strap】

Insert a small flathead screwdriver (or similar) into the clasp hole as shown in Figure 1, and lift the clasp. Then, slide the clasp to the desired position (Figure 2), align the grooves on the back of the strap with the grooves on the clasp, and press it down with your finger. Insert the screwdriver into the hole as you did when you lifted the clasp, and push it back down using leverage (Figure 3).

※ If the clasp is not firmly seated in the grooves or is forcibly pressed in ways other than those described, this may cause damage.



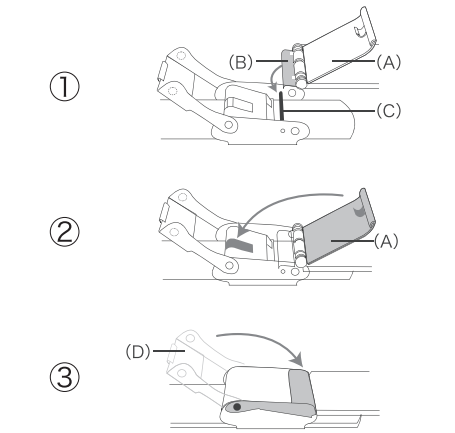
【Attaching the clasp onto a mesh strap】

① Place the hook (B) on the underside of the 12 o'clock metal fitting (A) onto the bar (C) on the inside of the clasp.

※ If (B) is not hooked onto (C) correctly, the watch could fall and be damaged.

② Push the metal fitting (A) over the bar. When the metal fitting is pushed onto the hook, the hooks on the back overlap and fix the clasp in place.

③ Finally, push the safety bracket (D) over to the other side.



- **Warranty**
- This watch is covered by the following warranty.
1. For one year after purchase, if any fault should arise under normal use in accordance with the manual, the watch will be repaired or adjusted free of charge. The part covered by the warranty is the watch body itself (the movement). The rest of the watch is not covered by the warranty.
2. In the following cases, the repair will be subject to payment even if it is within the warranty period and the part is covered by the warranty.
- (a) Malfunction or damage due to misuse or negligence.
- (b) Malfunction or damage due to fire, flood, earthquake, or other natural disasters.
- (c) Malfunction or damage due to improper repair or modification.
- (d) Change in appearance that occurs during use (case, glass, minor scratches on the crown, etc.).
- (e) The warranty card does not contain the dealer's stamp and date of purchase, or it has been re-written.
- (f) The warranty card is not presented.

3. When repairing the watch, it may be necessary to replace the movement or use alternative parts for the case, dial, hands, glass, strap, etc.

4. We promise to repair the product free of charge within the period and under the conditions specified in this document. This warranty does not affect your statutory rights.

SPECIFICATION

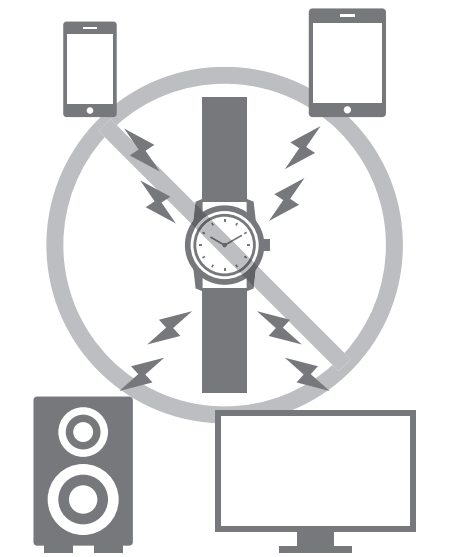
- Model: CAP-38
- Number of jewels: 22
- Driving system: automatic with manual winding mechanism
- Normal usage accuracy: average -15 seconds to +25 seconds per day (at room temperature: 5° C to 35° C)
- Features: 6 hands (hours, minutes, seconds, power reserve, 24-hour hand)
- Vibrations: 21,600 beats per hour (6 beats per second)
- Power reserve: 40 hours
- Water resistance: 5 ATM
- Warranty period: 1 year for movement

※Specifications are subject to change without notice for improvement.

※Accuracy is static accuracy. The accuracy range may be exceeded depending on the specification conditions and operating environment (degree of mainspring winding / carrying time / watch posture / ambient humidity, etc.).

MAGNETIZATION

The watch uses a magnet in its ultra-compact step motor. If magnetized by a cell phone, computer, television, hi-fi, speaker, electronic Mah Jongg table or other electrical appliance or magnet, the watch may temporarily stop, lose or gain time. If this happens, the watch should be thoroughly inspected, adjusted and de-magnetized. Magnetization is not covered by the warranty.



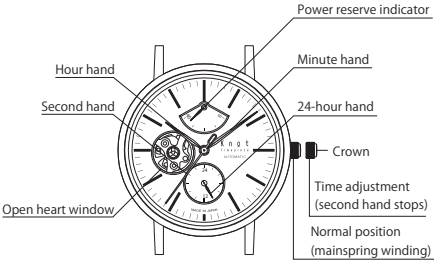
Original Knot Box

Please keep the original Knot box for your watch and strap in a safe place, so that it can be used when sending the watch for repair. The warranty will not cover any damage or malfunction that may arise when the watch is sent in a box other than the original Knot box. Thank you for your understanding.



Knot WATCH INSTRUCTIONS FOR USE

Names and main functions of each part



Mainspring

The mainspring lasts approximately 40 hours when fully wound. The watch will maintain stable accuracy when fully wound.

Winding guide. (This watch is a mechanical automatic watch (with manual winding function).)

□ Automatic winding

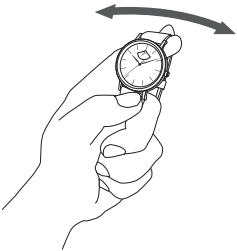
When worn on the wrist, the mainspring is wound by daily arm movements. The watch should be worn for at least 8 hours per day. If your arm does not move very much, such as when working at a desk, the watch may not be sufficiently wound. In such cases, shake the watch to wind up the mainspring.

□ Manual winding

Rotate the crown to wind it until the power reserve indicator needle points to the 40 position, indicating that the mainspring is sufficiently wound.

Excessive manual winding can result in malfunction. We recommend that you refrain from winding the watch manually, except to wind it a few times to start it before use.

Hold the watch firmly and shake it from side to side to wind the mainspring. *The rotor can be wound in both directions.



How to set the time

1. Before setting the time, ensure that the mainspring is fully wound.
2. Pull the crown out to position ①. When the crown is pulled out, the second hand stops. To set the time correctly, pull the crown out when the second hand is at the 12 o'clock position.



3. Turn the crown counterclockwise to move the minute/hour hand to the current time.

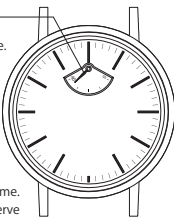
4. Return the crown to the ② position to complete the adjustment.



- 24-hour hand
- The 24-hour hand allows you to tell the difference between AM and PM. Since the 24-hour hand is synchronized with the hour hand, it cannot be adjusted independently to display a different time zone.

Power reserve indicator

- The power reserve indicator allows you to view the tension on the mainspring at a glance.
- The time indicated by the power reserve needle is the length of time for which power remains on the mainspring. When it points to 40, it is fully wound.
- This indication of time for which power remains on the mainspring is approximate. Note that there may be a difference between the displayed time and the actual remaining time.
- If the mainspring is not wound, the power reserve needle will move toward zero (0) over time.
- Due to individual differences in each movement, the needle may not point to 0 even if the mainspring is not wound.
- If the crown is turned to wind the mainspring, the power reserve needle will move toward the fully wound position (40).



Today's Watch on Today's Clothes

You can make fashion more enjoyable by changing bands to complement today's style or TPO, just like you select a jacket or necktie to go with your favorite shirts. By allowing you to select watches and bands independently, Knot custom ordering lets you make the most of your wrist fashion, day after day.



You can custom order through our website. Give it a try!



<http://knot-designs.com>

From the strap one in the membership registration will be delivered in nationwide free shipping.



Choose from a vast selection of more than 280 styles and colors of watch bands. Change them to match the season, your clothes for the day, or just to reflect the way you feel. It's fun and easy to create your own coordinated look!

Watch more than 40 styles

Strap more than 280 styles

more than 10000 Combinations

Japan

- Kichijoji Gallery Shop
- Kichijoji Factory Shop
- Omotesando Gallery Shop
- Yokohama Motomachi Gallery Shop

- Hoshigaoka Gallery Shop
- Shinsaibashi Gallery Shop
- Kobe Motomachi Gallery Shop
- Tenjin Gallery Shop

Overseas

- Taipei Gallery Shop
- Taichung Gallery Shop
- Singapore Gallery Shop
- Bangkok Gallery Shop
- Hanoi Gallery Shop