

To get the most from your watch, please take note of the following:

- When not wearing the watch, place it in a sunny location such as a window sill.
 - Once per month, place the watch in direct sunlight for 5-6 hours.
- While the watch is covered by clothing and not exposed to light, it will not be able to fully charge.

Charging Time

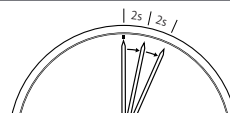
Environment	Sunny	Cloudy	20cm under a florescent desk lamp	Indoor lighting
Brightness (lux)	100,000	10,000	3,000	700
Time required to power the watch for one day	3 mins	12 mins	38 mins	150 mins
Time from the watch being stopped until it can run normally	40 mins	2.5 hrs	6 hrs	60 hrs
Time from the watch being stopped until it is fully charged	7.5 hrs	30 hrs	90 hrs	—
Approximate runtime from fully charged	4 months ~ 6 months			

Charging Environment

○	Sunny (direct sunlight)
△	Cloudy, indoor window sill, 20cm under a florescent desk lamp, indoor lighting
×	In a drawer, upside down, dark environment

Low Battery Notification

If the battery is low, the second hand will jump in 2-second intervals. The watch is still running accurately in this state, but it will stop after about two days. Once the battery has been recharged by exposing the watch to light, the second hand will move in 1-second interval again.



2. In the following cases, the repair will be subject to payment even if it is within the warranty period and the part is covered by the warranty.

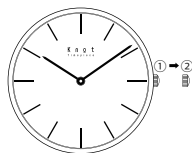
- Malfunction or damage due to misuse or negligence.
- Malfunction or damage due to fire, flood, earthquake, or other natural disasters.
- Malfunction or damage due to improper repair or modification.
- Change in appearance that occurs during use (case, glass, minor scratches on the crown, etc.).
- The warranty card does not contain the dealer's stamp and date of purchase, or it has been re-written.
- The warranty card is not presented.

3. When repairing the watch, it may be necessary to replace the movement or use alternative parts for the case, dial, hands, glass, strap, etc.

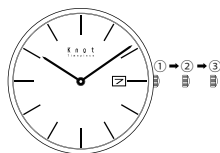
4. We promise to repair the product free of charge within the period and under the conditions specified in this document. This warranty does not affect your statutory rights.

Setting the time

Watches without a date window
Pull out the crown to position ② and rotate it to set the hours and minutes. After the hours and minutes are set, push the crown back into its original position to start the watch.



Watches with a date window
Pull out the crown to position ③ and rotate it to set the hours and minutes. After the hours and minutes are set, push the crown back into its original position to start the watch.



Setting the date (for watches with a date window)
Pull out the crown to position ② and rotate it to set the date. After the date is set, push the crown back into its original position to finish.
※ Since the date changes between 21:00 and 01:00, the date should not be set during this timeframe.

Straps

【Two-piece Type】

The strap is fitted with an Easy Lever (see image below). Attach the short half of the strap at the 12 o'clock side and the long half at the 6 o'clock side. Turn the watch and strap upside down, then insert the strap into the watch starting at the opposite side from the lever ①.

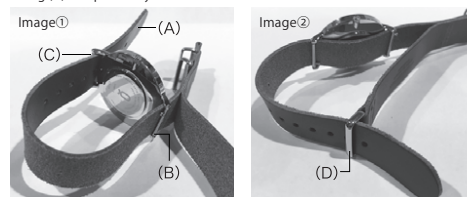


Push the lever inwards with your fingernail and slide the lever side of the strap (2) into the hole on both sides, then insert the other half of the strap in the same way. Take care not to damage the watch body when inserting the EasyLever into the hole.



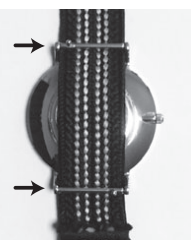
【Pull-through Type】

First, attach the two supplied Easy Levers onto the watch body. Image ①: Thread the long end of the strap (A) through the space between the watch case and spring bar (B) on the 12 o'clock side, and then the 6 o'clock side (C) in the same way. Image ②: Thread the long end of the strap through the other fitting (D) and pull firmly.



【Braid strap】

First, place the strap against the back of the watch. Then, attach two Easy Levers to the watch body to hold the strap in place.



※ Easy Levers can be purchased from our online shop. (set of two for ¥350).

Water resistance

Water resistance for daily life (3 or 5 bar) means the watch is able to withstand water droplets from daily perspiration, face washing, and sudden rainfall. The watch is not designed to be submerged in water. Water resistance for daily activities (10 bar) does not include scuba diving or saturation diving. The watch should not be placed under the tap. Since water leaves the tap at high pressure, a watch with water resistance for daily activities may not be sufficiently watertight. Always check that the crown is pushed in firmly before using the watch, to ensure it is watertight. Do not turn or pull out the crown when there is water on it, as this may allow the water to enter the mechanism.
※ Any repairs required as a result of water damage from improper use will be subject to payment even within the warranty period.

Average monthly precision

When worn at a temperature of -5° C to +50° C, the average monthly precision is between ±15 seconds and ±20 seconds.

Storage

Keep the watch away from electrical appliances, computers, audio-visual equipment, mobile phones and other devices which are magnetic or emit static electricity. Prolonged exposure to strong magnetic fields may magnetize the components and cause them to fail. De-magnetization repair will be subject to payment even within the warranty period.
In environments with temperatures below -5° C or above 50° C, the watch's operation may become degraded or cease. Prolonged exposure to such temperatures may cause the watch to malfunction. Do not leave the watch in locations with strong vibrations. Do not leave the watch in very dusty environments. Do not leave the watch in unusual environments such as hot springs/saunas or in drawers with mothballs. Leaving the watch in direct sunlight or strongly lit location for an extended period of time may lead to dial discoloration. Dial discoloration is not covered by the warranty. Do not leave the watch in locations where chemical vapors are emitted or where it will be exposed to chemicals.

Other notices

【Daily care】

The watch case and strap are in direct contact with the skin. If not kept clean, they may rust and stain the cuffs of clothing or cause a rash. When removing the watch, wiping off sweat and moisture with a soft cloth will extend the life of the case, strap and gaskets.

【Glass crystal】

If the case is subjected to a strong shock, a small distortion of the case may cause the crystal to crack.

【Metal straps】

From time to time, use a toothbrush to clean the strap with soapy water. When doing so, be careful not to splash water on the watch itself.

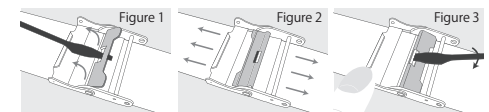
【Leather straps】

Leather straps are natural products and will therefore have wrinkles and creases. This characteristic is a result of the unique texture of natural products, and is not a fault. Leather straps may fade or change color if exposed to moisture. In order to prevent the leather from becoming hard and susceptible to cracking, it is recommended to wipe the leather with a soft cloth after use. Discoloration, deterioration, scratches and other changes in appearance due to use are not covered by the warranty. Furthermore, no responsibility will be accepted for any color transfer to clothing.

【Adjusting a mesh strap】

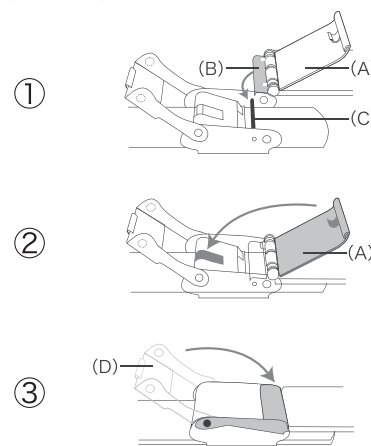
Insert a small flathead screwdriver (or similar) into the clasp hole as shown in Figure 1, and lift the clasp. Then, slide the clasp to the desired position (Figure 2), align the grooves on the back of the strap with the grooves on the clasp, and press it down with your finger. Insert the screwdriver into the hole as you did when you lifted the clasp, and push it back down using leverage (Figure 3).

※ If the clasp is not firmly seated in the grooves or is forcibly pressed in ways other than those described, this may cause damage.



【Attaching the clasp onto a mesh strap】

- Place the hook (B) on the underside of the 12 o'clock metal fitting (A) onto the bar (C) on the inside of the clasp.
- If (B) is not hooked onto (C) correctly, the watch could fall and be damaged. Push the metal fitting (A) over the bar. When the metal fitting is pushed onto the hook, the hooks on the back overlap and fix the clasp in place.
- Finally, push the safety bracket (D) over to the other side.



【IP (ion plating)】

The color of the ion plating may change depending on use and storage conditions (excessive sunlight, ultraviolet rays, humidity, chemicals, etc.).

Allergic reactions

Persons susceptible to allergic reactions may experience rashes, itching, and irritation of the skin. The following are some possible causes:
• Allergy to metal or leather
• Rust, dirt, sweat etc. on the watch or strap
If you experience any skin abnormalities, discontinue use immediately and consult a doctor.

Other precautions

Take care not to damage your fingernails when putting on and taking off the strap. If you fall or make contact with another person while wearing the watch, this may result in unexpected injury. If holding an infant or child, do not place the watch in contact with their skin, as it may cause an injury or allergic reaction.

Battery

This watch uses a special rechargeable battery which is different from ordinary silver oxide batteries. Unlike disposable batteries such as dry cell or button cell batteries, rechargeable batteries can be used repeatedly while being charged and discharged. Depending on the operating environment, the charging efficiency of the rechargeable battery may decrease over a long period of time. In addition, with long-term use, the battery duration may become shorter due to wear and dirt on the mechanical parts, and deterioration of the lubricating oil. If there is a decline in performance, the watch should be sent for repair.

Automatic overcharging prevention

Charging the battery beyond the time required for a full charge will not cause any damage. When the rechargeable battery is fully charged, it is automatically prevented from being overcharged.

Warning

- Do not remove the rechargeable battery.
- Replacing the rechargeable battery requires specialist expertise. Please refer to your watch dealer for assistance.
- If an ordinary silver oxide battery is used, it may rupture, overheat, or catch fire.
- When charging, do not place the watch too close to photographic lights, spotlights, incandescent lights etc., as this may cause the watch to become hot and damage the internal components.
- When charging using sunlight, do not place the watch on a car dashboard, as this may cause the watch to become very hot and lead to a malfunction.
- Do not allow the watch to exceed a temperature of 50° C.

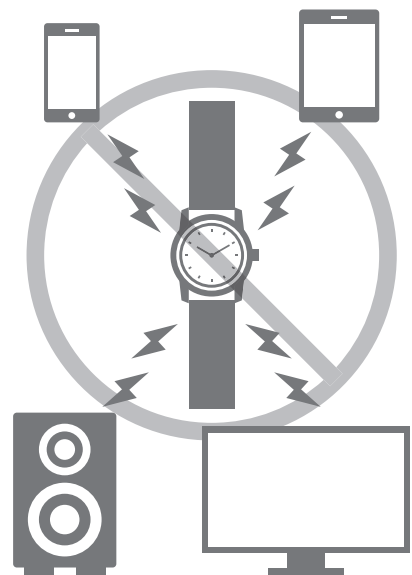
Warranty

This watch is covered by the following warranty.

- For one year after purchase, if any fault should arise under normal use in accordance with the manual, the watch may temporarily stop, lose or gain time. The part covered by the warranty is the watch body itself (the movement). The rest of the watch is not covered by the warranty.

Magnetization

The watch uses a magnet in its ultra-compact step motor. If magnetized by a cell phone, computer, television, hi-fi, speaker, electronic Mah Jongg table or other electrical appliance or magnet, the watch may temporarily stop, lose or gain time. If this happens, the watch should be thoroughly inspected, adjusted and de-magnetized. Magnetization is not covered by the warranty.



Original Knot Box

Please keep the original Knot box for your watch and strap in a safe place, so that it can be used when sending the watch for repair. The warranty will not cover any damage or malfunction that may arise when the watch is sent in a box other than the original Knot box. Thank you for your understanding.

